

ROMANTIC DANUBE

PLUS A 2-NIGHT PRE-CRUISE PACKAGE IN PRAGUE



JUNE 17 - 27, 2026

For those yearning for the romance of Old World Europe, a journey into the heart of the continent awaits! Explore the sites where empires rose, kings and queens were crowned, and composers like Mozart and Beethoven created their masterpieces. Timeless cities such as Vienna, and Budapest beckon and captivate visitors. From majestic abbeys and fortresses overlooking the Danube to a wealth of UNESCO World Heritage Sites, let the Danube's regal and romantic charm sweep you off your feet.

DAY	PORTS
6/17	DEPART U.S. (OVERNIGHT FLIGHT)
6/18	ARRIVE PRAGUE (HOTEL STAY)
6/19	PRAGUE (HOTEL STAY)
6/20	REGENSBURG, GERMANY (EMBARK)
6/21	REGENSBURG, GERMANY
6/22	PASSAU, GERMANY
6/23	KREMS, AUSTRIA
6/24	VIENNA, AUSTRIA
6/25	VIENNA, AUSTRIA
6/26	BUDAPEST, HUNGARY
6/27	BUDAPEST, HUNGARY (DISEMBARK)

WEDNESDAY, JUNE 17

Depart the U.S. on an overnight flight bound for **Prague, Czech Republic**. (In-flight dinner)

THURSDAY, JUNE 18

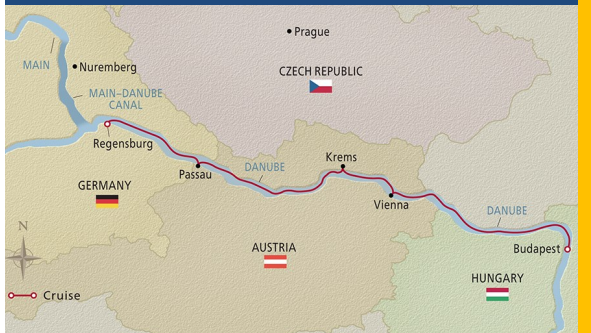
Arrive in **Prague, "City of a Hundred Spires."** Check into our centrally located hotel for two nights. Enjoy dinner this evening at a local restaurant. (In-flight breakfast, D)

FRIDAY, JUNE 19

After breakfast at the hotel we will depart with our local guide on a morning sightseeing tour that will reveal why Prague is considered one of Europe's most attractive cities. Visit the 1,000-year-old **Prague Castle** and **St. Vitus Cathedral**, and then cross the fascinating **Charles Bridge** to the **Old Town Market Square**. Following our tour, enjoy lunch at a local restaurant. After lunch the rest of the afternoon and evening are free to explore the many charms and delicious cuisine of this delightful city. (B,L)

SATURDAY, JUNE 20

Following breakfast, depart **Prague** and transfer to **Regensburg, Germany**. Board **Viking's Longship Gullveig**. The ship remains docked overnight. (B)
(BEGINNING WITH DINNER TODAY, ALL MEALS ARE INCLUDED ON THE SHIP)





SUNDAY, JUNE 21

REGENSBURG, GERMANY

This morning, meet your local guide for a walking tour through the scenic town of **Regensburg**. See one of the largest groupings of 13th- and 14th-century church spires, towers and patrician houses north of the Alps. You will also encounter the 12th-century Old Stone Bridge, St. Peter's Cathedral and a number of idyllic courtyards. *Alternately*, you may choose to cast off on a ferry boat ride to marvel at the 400-foot chalk cliffs and dramatic scenery of the Danube Narrows. You will also visit the renowned Weltenburg Abbey, famous for its dark ale, brewed here by monks since 1050. Upon your return in the afternoon, you will have the opportunity to enjoy the same included walking tour of Regensburg that was offered this morning. Or, you may choose instead to sample some of the excellent local beer on an *optional* excursion to explore the brauhaus culture and Bavarian microbrews or a full-day tour to Nuremberg, which is also an option. Rejoin the ship for dinner. The ship departs this evening.



MONDAY, JUNE 22

PASSAU, GERMANY

Arrive this morning in **Passau**, at the confluence of the Inn, Ilz and Danube Rivers. Your guided walk along the town's narrow streets takes you through Old Town and past traditional patrician houses. See the New Bishop's Residence and view the impressive baroque St. Stephen's Cathedral. Enjoy lunch on board the ship, and return to the city for further exploration on your own. *Alternately*, you may instead choose a full-day *optional* excursion to explore glorious Salzburg; visit the Italianate Old Town, see settings from the film *The Sound of Music* and enjoy lunch at Austria's oldest restaurant. Return to the ship for dinner and departure.



TUESDAY, JUNE 23

KREMS, AUSTRIA

This morning, cruise leisurely through the captivating Wachau Valley, a UNESCO World Heritage Site, spotting attractive riverside towns and castle ruins along the way. After lunch, disembark in **Krems** and visit Götweig, a working Benedictine abbey that owns many of the vineyards along the Danube. The splendid ceiling fresco in the imperial stairwell is one of the largest in the world. Visit the church, a masterpiece of baroque architecture. Rejoin the ship and continue cruising toward Vienna. Arrive in Vienna just after dinner and enjoy a relaxing evening. Or, you may choose one of this evening's *optional* excursions, such as a classical concert in the "City of Waltzes."



WEDNESDAY, JUNE 24

VIENNA, AUSTRIA

Awake in **Vienna**. Today, tour this Austrian capital. Ride along the Ringstrasse, which replaced the city walls in the mid-19th century. See some of the city's baroque architecture, including the world-famous Opera House, St. Stephen's Cathedral and Hofburg Palace. Return to the ship for lunch. The rest of the day is yours to further explore. Or, you may join an *optional* excursion to visit Schönbrunn Palace, erected in 1778 and admired as the "Versailles of Vienna." Dinner is served on board. Or, you may choose to head to the famed Grinzing district to join locals in a high-spirited Heurigen celebration of the year's wine vintage.

THURSDAY, JUNE 25

VIENNA, AUSTRIA

Spend another enriching day in **Vienna**. You may choose to join one of the many *optional* excursions, including a panoramic tour of Vienna by bike, a visit to the local Farmers' Market with a local chef, or an all-day excursion to the Slovakian capital of Bratislava, filled with lovingly restored baroque city palaces and leafy squares. Early this evening, enjoy scenic cruising as the ship starts sailing toward Budapest.



FRIDAY, JUNE 26

BUDAPEST, HUNGARY

Arrive in **Budapest**, Hungary's vibrant capital divided by the Danube River. Take a panoramic city tour through the more modern Pest side of the city. Journey along Andrassy Avenue and see the 19th- and 20th-century mansions, National Opera House, Parliament Building and Chain Bridge. Drive through Heroes' Square and learn more about Hungarian history, then cross the Danube to Buda's Castle District. Visit Matthias Church and enjoy brilliant views of the Danube and the beautiful Hungarian Parliament building from Fishermen's Bastion. Return to the ship for lunch; the rest of the day is yours to explore both sides of the city. You may also choose to join one of several *optional* excursions designed to reveal this fascinating city's culture, history and cuisine in greater depth.

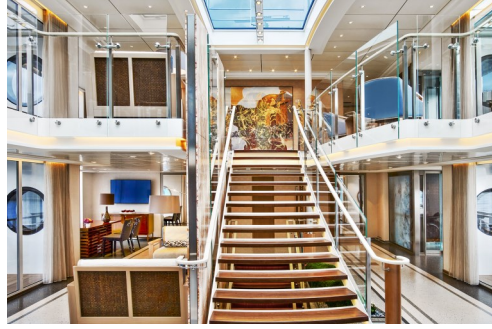
SATURDAY, JUNE 27

BUDAPEST, HUNGARY

Following breakfast on the ship, we will make our way to the airport for our flight home. We'll be taking with us wonderful memories of the Romantic Danube!

DISCOVER VIKING LONGSHIPS

The award-winning Viking Longships® showcase innovative engineering, streamlined Scandinavian design and understated elegance. Thoughtfully engineered to get you closer to your destination, they provide unprecedented levels of comfort, including spacious staterooms with full-size verandas, the largest suites on Europe's rivers and the most al fresco dining.



CABINS AND FARES PER PERSON

CABIN/CATEGORY

COST

A VERANDA STATEROOM - 205 sq. ft. - Upper Deck	\$8,500
B VERANDA STATEROOM - 205 sq. ft. - Middle Deck	\$8,300
D FRENCH BALCONY - 135 sq. ft. - Middle Deck	\$7,800
F HALF-HEIGHT FIXED WINDOWS - 150 sq. ft. - Main Deck	\$6,900



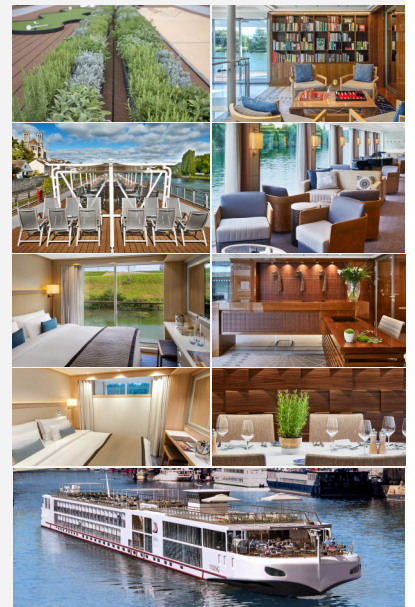
The Prague package is based on the value of the Euro as of November 2024. An airfare estimate of \$1,800 is included in the trip pricing. Final invoices may reflect a change based on the exchange rate at the time of billing and the actual airfare secured.

PRICING IS PER PERSON IN DOUBLE OCCUPANCY. ADDITIONAL RATES AVAILABLE UPON REQUEST.

- In-room temperature control
- Deluxe hotel-style bedding with luxury linens and pillows
- Spacious bathroom with heated bathroom floor & anti-fog mirror
- Large wardrobe, full-length mirror, hair dryer, safe direct-dial telephone, refrigerator
- 40" flat-screen TV
- Complimentary Wi-Fi
- Entertainment on-Demand providing complimentary TV, movies and music library
- Complimentary bottled water replenished daily
- Desk and chair
- 110/220 volt outlets & USB ports
- Premium Freyja® toiletries; plush robes & slippers available upon request
- Stateroom steward & twice-daily housekeeping

VIKING LONGSHIP GULLVEIG

- Comfortable staterooms with a floor-to-ceiling sliding glass door opening to a full-size veranda (Categories A & B) or sliding glass door to create a French balcony (Category D)
- Spacious lower level river-view stateroom with half-height picture window (Category F)
- Sun Deck with 360-degree views & shaded sitting area
- Organic herb garden & solar panels
- Putting green & walking track
- Aquavit Terrace & Lounge, a revolutionary indoor/outdoor viewing area at the bow of the ship for al fresco dining
- Viking Lounge & Bar with floor-to-ceiling glass doors
- Restaurant with floor-to-ceiling windows for panoramic views
- Library & onboard shop
- Elevator from Middle to Upper Deck only (no elevator access for lower level staterooms)
- Laundry service
- Ecologically friendly hybrid engines producing less vibrations for a smoother ride



ROMANTIC DANUBE

PLUS A 2-DAY PRE-CRUISE PACKAGE IN PRAGUE!

JUNE 17-27, 2026



Additional discount available to past Viking travelers!

DEPOSIT: ONLY \$25 PER PERSON!*

*This reduced deposit amount is a Viking River Cruises' promotion that could change at any time.

Payment is due in full one month after your reservation is submitted to Viking.

Cancel up until February 9, 2026 with only a \$100 per person penalty.

TRAVEL DOCUMENTS: All passengers must carry a passport valid for at least six months (December 28, 2026) beyond the return date of the trip. A passport card is NOT acceptable for this trip. It is each traveler's responsibility to ensure their reservation form contains accurate details, including (but not limited to) correct spelling as listed on the traveler's passport. American Bank, American State Bank and Cruises and Tours Worldwide cannot be held responsible for travelers who are prohibited from boarding the flight or cruise due to non-compliant identification or incorrect information submitted. In addition, all U.S. travelers entering the European Union must apply online for an **ETIAS Visa Waiver** prior to departure and pay the application fee, which is expected to be \$9 per person. Details on how to apply for the ETIAS Visa Waiver will be communicated prior to departure.

INCLUDED

ROUND TRIP LOCAL AIRPORT TRANSFERS

ROUND TRIP AIRFARE

2-NIGHTS HOTEL ACCOMMODATIONS IN PRAGUE

PRE-CRUISE LAND PACKAGE IN PRAGUE AS DESCRIBED IN FLIER

ALL BAGGAGE HANDLING DURING THE TRIP

TOUR RELATED TAXES AND GRATUITIES FOR GUIDES, DRIVERS AND BELLMEN

7-NIGHT CRUISE IN SELECTED ACCOMMODATIONS

ALL MEALS & ENTERTAINMENT ON THE SHIP

SILVER SPIRITS BEVERAGE PACKAGE - INCLUDES PREMIUM WINES BY THE GLASS, HOUSE CHAMPAGNE BY THE GLASS, COCKTAILS, APERITIFS, AND ANY DRINK UP TO \$18, THROUGHOUT THE DAY AND ANYWHERE ON THE SHIP

IMMERSIVE TOUR IN EVERY DESTINATION

CUSTOMARY SHIPBOARD GRATUITIES

PORT CHARGES, TAXES & GOVERNMENT FEES

SERVICES OF AN AMERICAN SPIRIT CLUB HOST

NOT INCLUDED

OPTIONAL TRAVEL PROTECTION PLAN

NOMINAL GRATUITIES FOR EXCURSION GUIDES AND DRIVERS

OPTIONAL PREMIUM EXCURSIONS

RESERVATIONS:

Please complete a reservation form and return it with your deposit, and optional travel protection premium, if desired, to:

**American State Bank
Attn: Loreen Marra
525 N. Main Avenue
Sioux Center, IA 51250**

Phone: 712-722-4846

Email: Loreen.Marra@ambankiowa.com

Checks payable to **American Spirit Club**

OPTIONAL TRAVEL PROTECTION: An Optional Travel Protection Plan is available at the following per person rates:

Double: Category A: \$612 Category B: \$598

Category D: \$562 Category F: \$497

Single: Rates available upon request

CANCELLATION POLICY Cancellations received **prior** to making final payment will be assessed a penalty equal to the amount of your deposit. Cancellations received **after** making final payment, but by **February 9, 2026**, will be assessed a penalty of \$100 per person. Cancellations received after **February 9, 2026** will be subject to the penalties assessed by Viking River Cruises and the airline used for this trip. The amount of the penalties will be dependent on the date of your cancellation. We highly recommend that all travelers protect their vacation investment by purchasing an optional travel protection plan. Your group representative can provide information on a plan offered by Travel Guard. Should the passenger purchase travel protection and need to cancel after **February 9, 2026**, a travel protection claim must be filed with Travel Guard. Please note that we encourage all travelers to purchase a plan at the time of initial trip deposit and that the premium is refundable for cancellations received before **February 9, 2026**.

Insurance is underwritten by National Union Fire Insurance Company of Pittsburgh, Pa. a Pennsylvania Insurance Company (NAIC #19445), currently authorized to transact business in all states and the District of Columbia.

TRAVEL ARRANGEMENTS BY CRUISES AND TOURS WORLDWIDE, ST. LOUIS, MO Cruises and Tours Worldwide acts only as an intermediary and agent in handling travel arrangements that are actually provided by other suppliers. This agency, therefore, shall not be responsible for breach of contract or any careless actions or omissions on the part of such suppliers, which result in any loss, damage, delay or injury to tour participants. Cruises and Tours Worldwide may not be held responsible for losses or expenses due to sickness, lack of appropriate medical facilities or practitioners, weather, strikes, theft or other criminal acts, war, terrorism or acts of God. Cruises and Tours Worldwide retains the right to substitute accommodations or services of comparable quality if the advertised services become unavailable. Cruises and Tours Worldwide reserves the right to cancel this tour if the minimum number of tour participants is not met. The published price of this tour is based on rates available at the time of planning the trip. Cruises and Tours Worldwide reserves the right to increase the cost of the tour, at any time, in the unlikely event that our tour suppliers impose price increases such as, but not limited to, fuel surcharges. Proof of such rate adjustments from our suppliers will be provided.